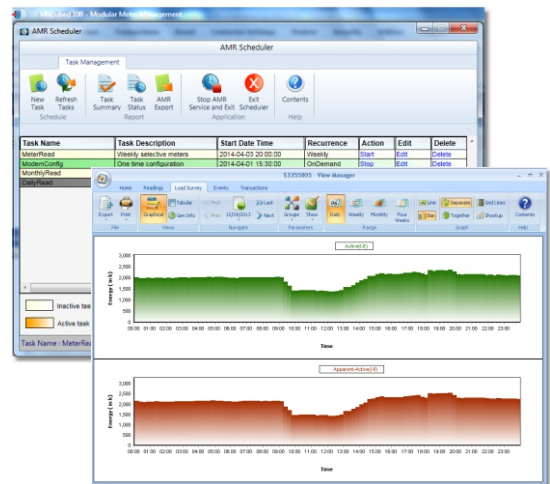


M-Cubed 100 is an advanced Windows-based application for AMR using CEWE Meters and GSM/GPRS Modems (CEWE or 3rd party), and configuration of CEWE make meters and GSM/GPRS modems. It has an interactive user interface for meter data viewing and report generation which helps in effective data management. Access rights can be configured to meet the needs of each individual user.



Application

- Management of meters
- Configuration of meters
- Collection of metering data
- Metering data reporting
- Metering data export for use in other applications

Benefits

- Easy to install, configure and use, through graphical user interface (GUI)
- Easy integration with third-party applications through user-defined export templates
- Minimal training time for roll-out through intuitive GUI

Features

- Multi-level user management and access rights
- Presentation of metering data in tabular and graphical formats
- Database for meter contact details, meter readings and load profile data
- Facility for small scale deployments to collect on demand or scheduled base meter data using AMR
- Automatic meter data export facility
- Reports for quick analysis and monitoring of AMR status
- Supported operating system - Microsoft® (Windows XP, Windows 7, Windows 8, Windows Server 2003, Windows Server 2008 and Windows Server 2012)

M-Cubed 100

Modular functions

User Management	Flexible user management allows individual access rights for each user
Customer Management	Effective management of customer information via customer manager module
Meter Information Management	Efficient storage of information such as serial number, connection details, contact details, location, kVA rating, contract demand value etc
Meter Data Collection	Direct meter reading Local read via hand-held unit (HHU) Remote meter reading through GSM/GPRS/TCP/IP
Meter Data View and Reports	Meter information Instantaneous electrical parameters Energy and maximum demand (MD) register readings Event logs Load survey views: - Tabular and line/ bar chart - Daily, weekly or monthly view AMR Report : - Task Summary report - Summary of each AMR task executed - Task Status report - Detail information about the pass/fail status of each AMR task
Meter Data Export	Data can be exported in industry-standard formats, including ASCII and CSV, for integration with third-party software.
Modem Configuration	Configuration of GSM/ GPRS modems to be used for remote meter reading.
AMR Scheduler	Scheduling of tasks to be performed automatically with defined reading frequency
Meter Configuration (Optional)	Configuration of meters with site-specific features, such as CT/PT configuration, display configuration, etc.